

## E. Gleichstellung

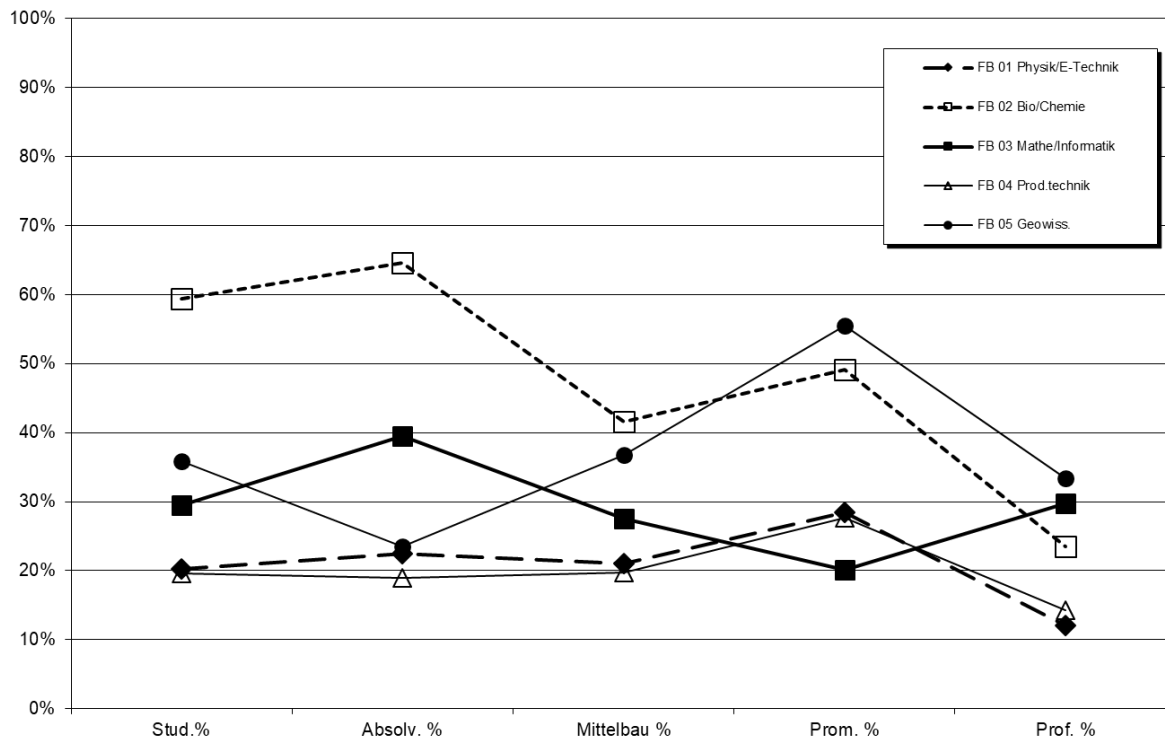
### 1. Kaskadenmodell: weibl. Anteile auf den verschiedenen Qualifikationsstufen

	Anteil weiblich in %					
	Stud. %	Absolv. %	Mittelbau %	Prom. %	Habil. %	Prof. %
FB 01 Physik/E-Technik	20%	22%	21%	28%		12%
FB 02 Bio/Chemie	59%	65%	42%	49%		24%
FB 03 Mathe/Informatik	29%	40%	28%	20%		30%
FB 04 Prod.technik	20%	19%	20%	28%		14%
FB 05 Geowiss.	36%	24%	37%	56%		33%
<b>MINT Uni Bremen</b>	<b>31%</b>	<b>36%</b>	<b>26%</b>	<b>35%</b>	<b>11%</b>	<b>23%</b>
<b>MINT Bund</b>	<b>36%</b>	<b>32%</b>	<b>28%</b>	<b>34%</b>	<b>28%</b>	<b>18%</b>
FB 06 Rechtswiss.	64%	62%	43%	51%		13%
FB 07 Wirtschaftswiss.	46%	44%	42%	46%		23%
FB 08 Soz./Pol.	55%	63%	53%	58%		48%
FB 09 Kulturwiss.	73%	79%	59%	86%		58%
FB 10 Sprach./Lit.wiss.	75%	83%	76%	65%		50%
FB 11 Human./Gesundheitswiss.	82%	85%	67%	74%		56%
FB 12 Erziehungswiss.	84%	79%	71%	55%		61%
<b>GW/SW Uni Bremen</b>	<b>66%</b>	<b>71%</b>	<b>60%</b>	<b>59%</b>	<b>23%</b>	<b>45%</b>
<b>GW/SW Bund</b>	<b>60%</b>	<b>63%</b>	<b>53%</b>	<b>49%</b>	<b>44%</b>	<b>35%</b>
MARUM			38%			35%
SOCIUM			49%			33%
sonstige Einheiten			48%			33%
Zentralverw.			75%			0%
<b>Einheiten außerh. FB</b>			46%			32%
<b>Uni Bremen insg. (2021)</b>	<b>53%</b>	<b>58%</b>	<b>40%</b>	<b>44%</b>	<b>18%</b>	<b>33%</b>
<b>Bund insg. (2020)</b>	<b>52%</b>	<b>51%</b>	<b>39%</b>	<b>39%</b>	<b>37%</b>	<b>27%</b>

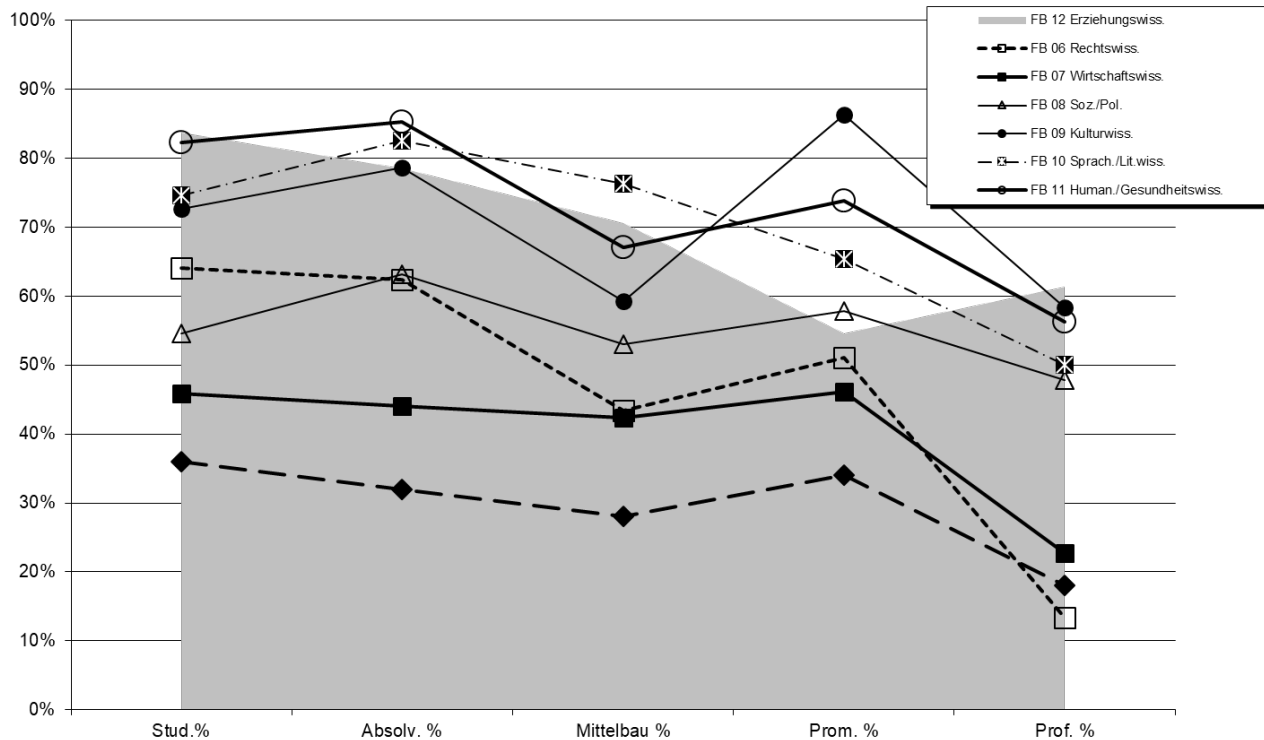
Bund-Daten: aus der Bundesstatistik (Destatis2020), bereinigt um Human-, Veterinärmedizin u. Agrarwiss.  
 Promotionen und Habilitationen Uni Bremen: jeweils 3-Jahresdurchschnitt-Schnitt ('19-'21)

Fortsetzung: Kaskadenmodell

Kaskadenmodell Mathe/Informatik/Naturwiss./Technik (MINT)

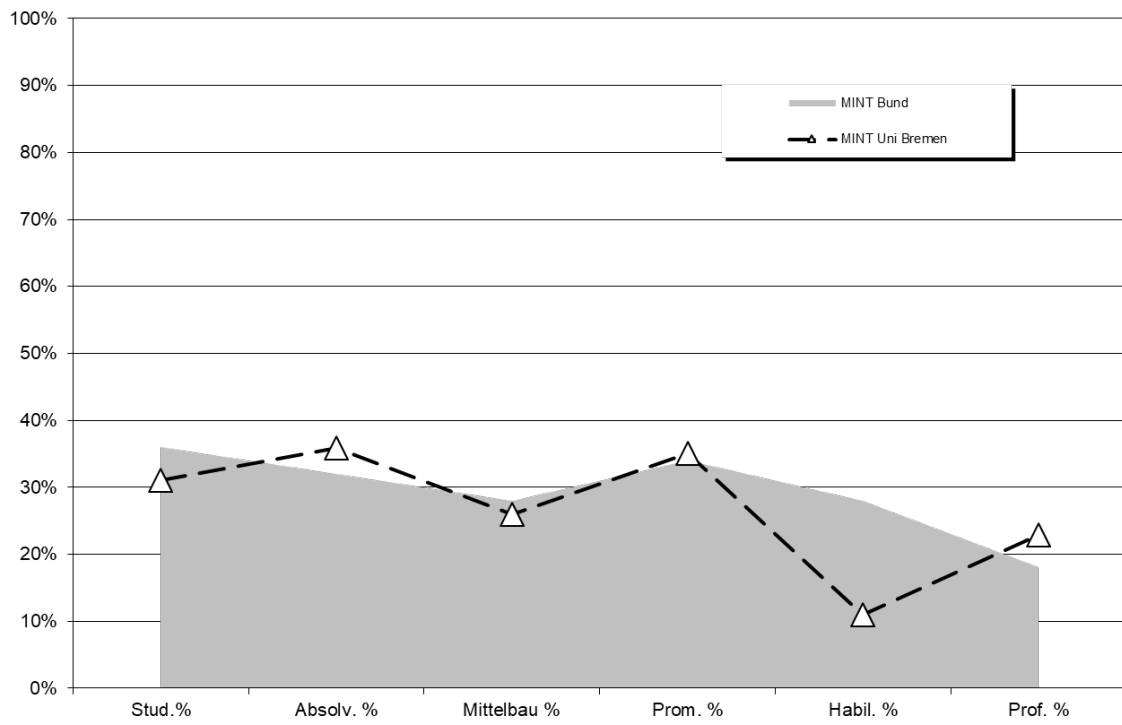


Kaskadenmodell Geistes-u. Sozialwissenschaften (GW/SW)

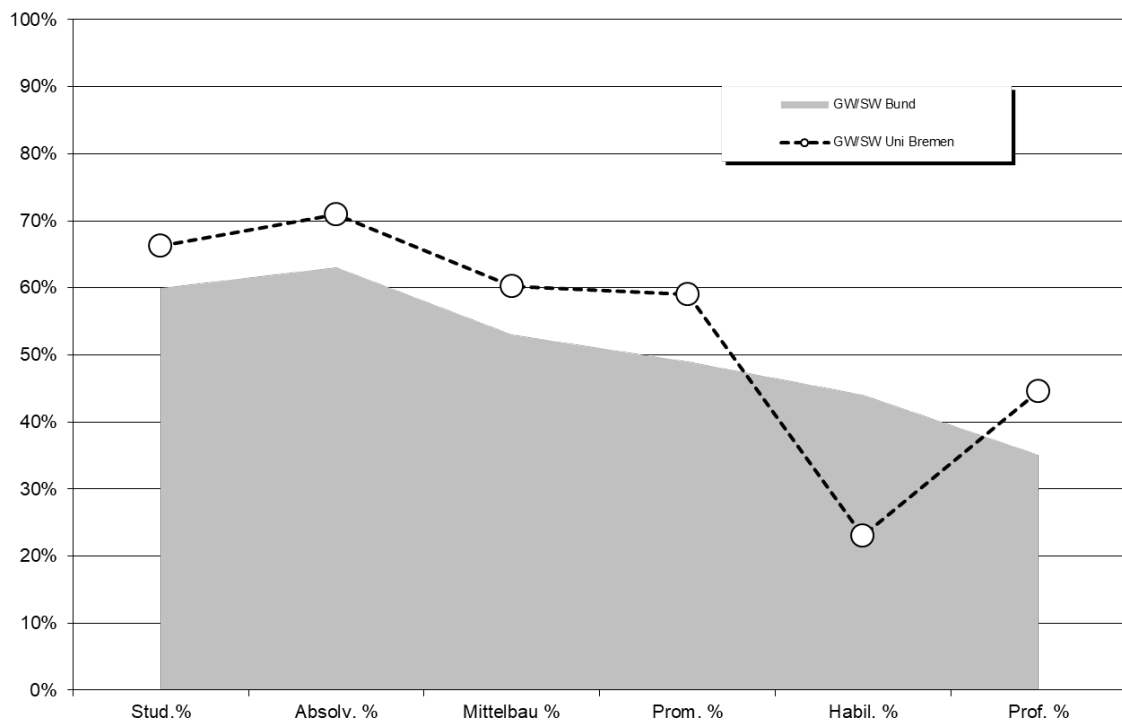


Fortsetzung: Kaskadenmodell

Kaskadenmodell Uni Bremen Fächergruppen im Vergleich zur Bundesstatistik



Kaskadenmodell Uni Bremen Fächergruppen im Vergleich zur Bundesstatistik



## 2. Studierende/Promotionen/Personal: Anteile weiblich im Zeitverlauf

### a) Studierende

Fachbereich	weibliche Anteile in %							
	WS 14/15	WS 15/16	WS 16/17	WS 17/18	WS 18/19	WS 19/20	WS 20/21	WS 21/22
FB 01	18,5%	19,4%	19,8%	20,5%	22,0%	23,9%	21,3%	20,3%
FB 02	57,0%	57,1%	58,5%	59,3%	59,3%	60,1%	58,9%	59,4%
FB 03	30,6%	30,9%	29,6%	28,8%	29,3%	29,5%	29,1%	29,5%
FB 04	19,1%	18,9%	18,4%	20,4%	20,1%	19,6%	19,3%	19,6%
FB 05	38,2%	36,8%	35,4%	36,2%	34,5%	35,1%	32,3%	35,9%
FB 06	57,1%	57,8%	58,4%	59,4%	60,6%	61,1%	63,6%	64,0%
FB 07	44,7%	44,1%	43,6%	43,1%	42,6%	42,9%	45,8%	45,9%
FB 08	50,6%	50,3%	51,5%	53,5%	53,1%	53,6%	53,1%	54,6%
FB 09	71,8%	73,0%	71,7%	70,4%	70,6%	70,7%	71,0%	72,7%
FB 10	76,9%	77,1%	76,5%	76,9%	76,4%	76,4%	76,2%	74,6%
FB 11	79,4%	79,9%	80,5%	81,0%	81,9%	82,0%	83,5%	82,3%
FB 12	75,6%	75,5%	75,5%	73,7%	74,3%	75,8%	82,4%	83,7%
o.A.	79,1%	78,5%	73,6%	75,6%	75,6%	75,3%	74,7%	72,5%
<b>Uni gesamt</b>	<b>50,8%</b>	<b>51,2%</b>	<b>51,1%</b>	<b>51,8%</b>	<b>51,9%</b>	<b>52,5%</b>	<b>52,7%</b>	<b>53,1%</b>

Fachbereich	weibliche Anteile in %							
	WS 14/15	WS 15/16	WS 16/17	WS 17/18	WS 18/19	WS 19/20	WS 20/21	WS 21/22
FB 01 - 05	30,2%	30,5%	30,1%	30,9%	31,2%	31,7%	30,6%	31,1%
FB 06 - 12	63,9%	64,0%	64,1%	64,5%	64,6%	65,0%	66,1%	66,3%
<b>Uni Ges</b>	<b>50,8%</b>	<b>51,2%</b>	<b>51,1%</b>	<b>51,8%</b>	<b>51,9%</b>	<b>52,5%</b>	<b>52,7%</b>	<b>53,1%</b>

### b) Promotionen

	weibliche Anteile in %							
	2014	2015	2016	2017	2018	2019	2020	2021
FB 01	27,8%	14,7%	23,1%	31,3%	22,9%	25,0%	36,7%	25,0%
FB 02	63,2%	63,0%	62,5%	64,7%	57,1%	56,4%	44,4%	45,5%
FB 03	14,7%	20,0%	28,9%	23,3%	18,4%	20,0%	15,8%	25,0%
FB 04	16,7%	12,5%	33,3%	21,1%	26,4%	30,3%	31,7%	19,4%
FB 05	43,9%	31,0%	55,2%	53,3%	54,5%	60,7%	45,2%	69,2%
FB 06	41,2%	56,3%	62,1%	52,4%	43,8%	66,7%	42,1%	52,6%
FB 07	33,3%	30,4%	17,6%	22,2%	54,2%	48,1%	36,4%	51,7%
FB 08	48,4%	55,6%	53,6%	53,6%	44,0%	65,4%	37,5%	63,6%
FB 09	77,8%	100,0%	60,0%	63,6%	72,7%	100,0%	75,0%	90,0%
FB 10	100,0%	87,5%	75,0%	83,3%	90,0%	60,0%	60,0%	83,3%
FB 11	64,7%	60,0%	59,1%	59,4%	68,2%	66,7%	78,9%	72,7%
FB 12	20,0%	54,5%	100,0%	71,4%	72,7%	40,0%	100,0%	50,0%
<b>Gesamt</b>	<b>42,8%</b>	<b>40,3%</b>	<b>45,9%</b>	<b>45,1%</b>	<b>44,7%</b>	<b>45,5%</b>	<b>40,8%</b>	<b>44,7%</b>

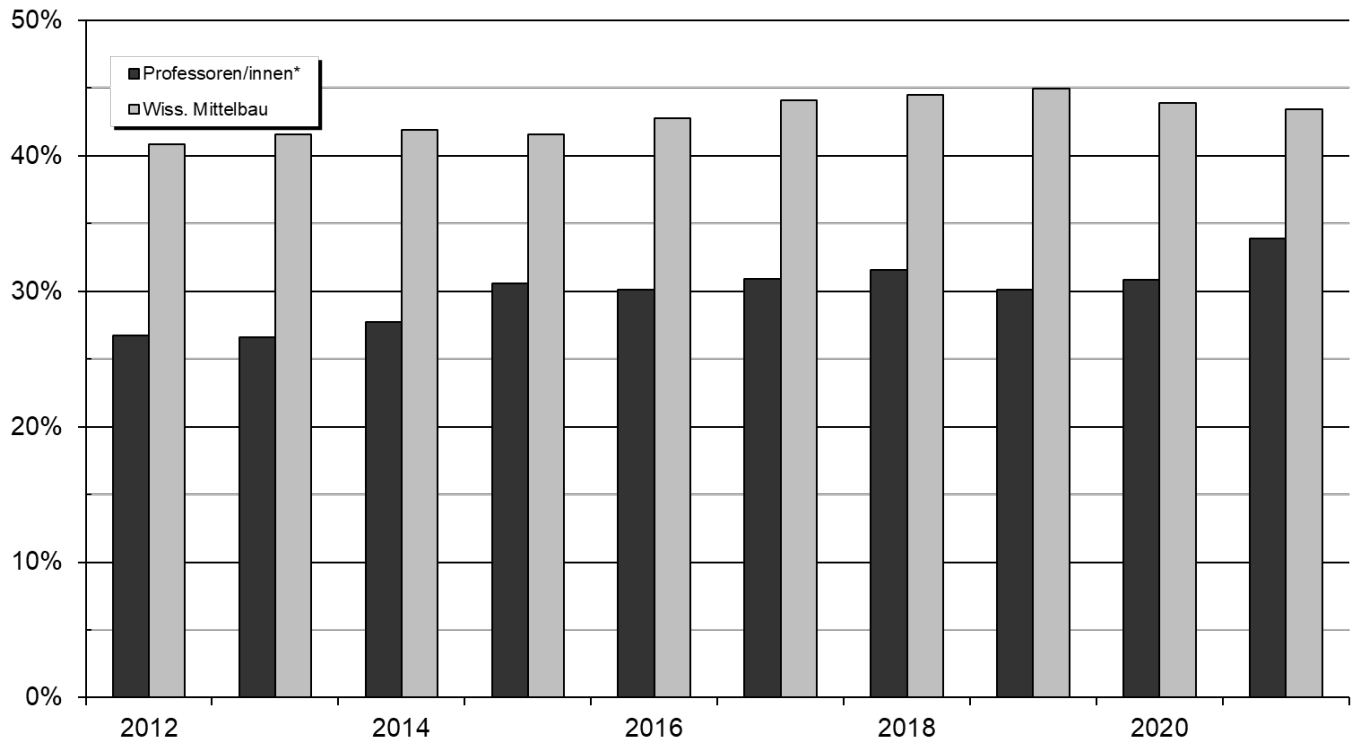
	weibliche Anteile in %							
	2014	2015	2016	2017	2018	2019	2020	2021
FB 01 - 05	38,4%	31,2%	41,1%	39,7%	36,3%	37,7%	34,1%	32,4%
FB 06 - 12	51,8%	55,4%	54,0%	53,7%	59,7%	60,2%	53,1%	62,4%
<b>Gesamt</b>	<b>42,8%</b>	<b>40,3%</b>	<b>45,9%</b>	<b>45,1%</b>	<b>44,7%</b>	<b>45,5%</b>	<b>40,8%</b>	<b>44,7%</b>

Fachbereiche sind über den 1. Gutachter zugeordnet.

c) Personal (Köpfe:) Weibliches Personal insgesamt (Köpfe in %) im Zeitverlauf

	2012	2013	2014	2015	2016	2017	2018	2019	2020	2021
Arbeiter/innen	40%	38%	36%	33%	32%	31%	31%	31%	33%	38%
Sekretariate	99%	99%	99%	99%	99%	99%	99%	99%	99%	99%
Techniker/innen	35%	36%	36%	35%	33%	33%	32%	33%	33%	31%
Verwaltung	77%	77%	78%	78%	77%	78%	77%	78%	79%	79%
<b>Nichtwiss. Personal insg.</b>	<b>63%</b>	<b>63%</b>	<b>64%</b>	<b>63%</b>	<b>62%</b>	<b>62%</b>	<b>62%</b>	<b>63%</b>	<b>64%</b>	<b>64%</b>
Professoren/innen*	27%	27%	28%	31%	30%	31%	32%	30%	31%	34%
Wiss. Mittelbau	41%	42%	42%	42%	43%	44%	44%	45%	44%	43%
<b>Wiss. Personal insg.</b>	<b>39%</b>	<b>40%</b>	<b>40%</b>	<b>40%</b>	<b>41%</b>	<b>42%</b>	<b>43%</b>	<b>43%</b>	<b>42%</b>	<b>42%</b>
<b>Personal insg.</b>	<b>48%</b>	<b>48%</b>	<b>48%</b>	<b>48%</b>	<b>48%</b>	<b>49%</b>	<b>49%</b>	<b>50%</b>	<b>50%</b>	<b>50%</b>

Anteil weiblich in %



d) Personal (VZÄ) Weibliches Personal insgesamt (Vollzeitäquivalente in %) im Zeitverlauf

	2012	2013	2014	2015	2016	2017	2018	2019	2020	2021
Arbeiter/innen	29%	27%	26%	24%	23%	23%	24%	25%	28%	33%
Sekretariate	100%	100%	99%	99%	99%	99%	98%	99%	99%	98%
Techniker/innen	30%	31%	31%	30%	29%	29%	28%	29%	29%	27%
Verwaltung	73%	74%	75%	75%	74%	75%	74%	76%	77%	76%
<b>Nichtwiss. Personal insg.</b>	<b>57%</b>	<b>58%</b>	<b>58%</b>	<b>58%</b>	<b>57%</b>	<b>58%</b>	<b>57%</b>	<b>59%</b>	<b>60%</b>	<b>59%</b>
Professoren/innen*	26%	26%	28%	30%	29%	29%	30%	29%	30%	33%
Wiss. Mittelbau	37%	37%	38%	38%	38%	40%	41%	41%	40%	40%
<b>Wiss. Personal insg.</b>	<b>35%</b>	<b>36%</b>	<b>36%</b>	<b>36%</b>	<b>36%</b>	<b>38%</b>	<b>39%</b>	<b>39%</b>	<b>38%</b>	<b>39%</b>
<b>Personal insg.</b>	<b>43%</b>	<b>43%</b>	<b>44%</b>	<b>44%</b>	<b>44%</b>	<b>45%</b>	<b>45%</b>	<b>46%</b>	<b>46%</b>	<b>46%</b>

\* Koop. Prof enthalten

## Fortsetzung: weiblicher Anteil in % Personal (VZÄ)

## Wissenschaftlicher Mittelbau

	2010	2011	2012	2013	2014	2015	2016	2017	2018	2019	2020	2021
FB 01	18%	17%	19%	18%	17%	19%	18%	18%	20%	20%	21%	21%
FB 02	46%	49%	49%	48%	49%	50%	43%	42%	39%	37%	39%	42%
FB 03	23%	25%	24%	26%	25%	22%	26%	29%	30%	26%	27%	28%
FB 04	23%	25%	26%	22%	19%	22%	19%	22%	23%	21%	20%	20%
FB 05	24%	25%	26%	26%	29%	29%	27%	31%	36%	43%	39%	37%
<b>IW/NW</b>	<b>24%</b>	<b>25%</b>	<b>26%</b>	<b>25%</b>	<b>25%</b>	<b>25%</b>	<b>24%</b>	<b>26%</b>	<b>27%</b>	<b>26%</b>	<b>26%</b>	<b>26%</b>
FB 06	47%	42%	45%	44%	44%	41%	41%	40%	40%	43%	45%	43%
FB 07	28%	32%	32%	32%	32%	33%	36%	36%	39%	40%	41%	42%
FB 08	49%	48%	40%	46%	54%	46%	50%	49%	51%	51%	51%	53%
FB 09	53%	51%	50%	51%	51%	54%	52%	56%	59%	59%	57%	59%
FB 10	70%	68%	71%	68%	71%	72%	75%	72%	74%	75%	82%	76%
FB 11	58%	59%	56%	61%	58%	59%	63%	69%	68%	68%	70%	67%
FB 12	66%	67%	64%	66%	69%	73%	74%	74%	71%	71%	75%	71%
<b>GW/SW</b>	<b>56%</b>	<b>54%</b>	<b>52%</b>	<b>53%</b>	<b>55%</b>	<b>55%</b>	<b>57%</b>	<b>58%</b>	<b>59%</b>	<b>60%</b>	<b>62%</b>	<b>60%</b>
MARUM			35%	38%	38%	33%	39%	41%	39%	40%	37%	38%
SOCIUM			46%	46%	46%	51%	47%	48%	46%	48%	46%	48%
sonstige Einheiten	39%	41%	46%	46%	46%	51%	47%	48%	46%	48%	46%	48%
Zentralverw.	62%	69%	72%	61%	59%	69%	69%	82%	84%	85%	75%	75%
<b>Einheiten außerh. FB</b>	<b>40%</b>	<b>42%</b>	<b>44%</b>	<b>44%</b>	<b>44%</b>	<b>44%</b>	<b>45%</b>	<b>48%</b>	<b>47%</b>	<b>48%</b>	<b>45%</b>	<b>46%</b>
<b>Insgesamt</b>	<b>36%</b>	<b>37%</b>	<b>37%</b>	<b>37%</b>	<b>38%</b>	<b>38%</b>	<b>38%</b>	<b>40%</b>	<b>41%</b>	<b>41%</b>	<b>40%</b>	<b>40%</b>

## Prof (inkl. Junior)

	2010	2011	2012	2013	2014	2015	2016	2017	2018	2019	2020	2021
FB 01	6%	6%	6%	6%	6%	9%	6%	6%	9%	9%	9%	12%
FB 02	17%	17%	16%	18%	18%	20%	20%	19%	21%	23%	23%	24%
FB 03	24%	27%	25%	25%	30%	28%	33%	31%	30%	29%	29%	30%
FB 04	5%	5%	5%	5%	4%	9%	9%	9%	8%	9%	9%	14%
FB 05	15%	19%	22%	20%	22%	22%	23%	18%	24%	25%	26%	33%
<b>IW/NW</b>	<b>14%</b>	<b>15%</b>	<b>15%</b>	<b>15%</b>	<b>17%</b>	<b>18%</b>	<b>19%</b>	<b>18%</b>	<b>19%</b>	<b>19%</b>	<b>19%</b>	<b>23%</b>
FB 06	36%	43%	31%	25%	14%	13%	18%	13%	12%	18%	19%	13%
FB 07	6%	7%	6%	6%	16%	17%	15%	10%	20%	17%	18%	23%
FB 08	35%	37%	41%	44%	47%	49%	47%	48%	58%	48%	44%	48%
FB 09	35%	47%	55%	55%	52%	60%	64%	63%	60%	43%	57%	58%
FB 10	39%	44%	44%	39%	39%	52%	50%	52%	47%	48%	50%	50%
FB 11	43%	43%	46%	45%	53%	53%	41%	41%	47%	41%	47%	56%
FB 12	64%	56%	50%	47%	50%	50%	41%	40%	39%	49%	56%	61%
<b>GW/SW</b>	<b>36%</b>	<b>40%</b>	<b>40%</b>	<b>39%</b>	<b>40%</b>	<b>43%</b>	<b>40%</b>	<b>40%</b>	<b>42%</b>	<b>38%</b>	<b>41%</b>	<b>45%</b>
MARUM			42%	29%	30%	33%	33%	45%	45%	53%	53%	35%
SOCIUM			26%	26%	40%	38%	50%	100%	20%	38%	36%	33%
sonstige Einheiten	18%	17%	26%	26%	40%	38%	50%	43%	25%	20%	20%	33%
Zentralverw.												
<b>Einheiten außerh. FB</b>	<b>17%</b>	<b>15%</b>	<b>20%</b>	<b>16%</b>	<b>26%</b>	<b>33%</b>	<b>33%</b>	<b>48%</b>	<b>36%</b>	<b>38%</b>	<b>35%</b>	<b>32%</b>
<b>Insgesamt</b>	<b>24%</b>	<b>26%</b>	<b>26%</b>	<b>26%</b>	<b>28%</b>	<b>30%</b>	<b>29%</b>	<b>29%</b>	<b>30%</b>	<b>29%</b>	<b>27%</b>	<b>33%</b>

## e) Habilitationen

	weibliche Anteile in %							
	2014	2015	2016	2017	2018	2019	2020	2021
<b>NW</b>	0%	0%	0%	0%	0%	25%	0%	0%
<b>GW</b>	100%	57%	63%	40%	80%	33%	0%	50%
<b>Gesamt</b>	<b>33%</b>	<b>57%</b>	<b>33%</b>	<b>24%</b>	<b>57%</b>	<b>29%</b>	<b>0%</b>	<b>22%</b>