

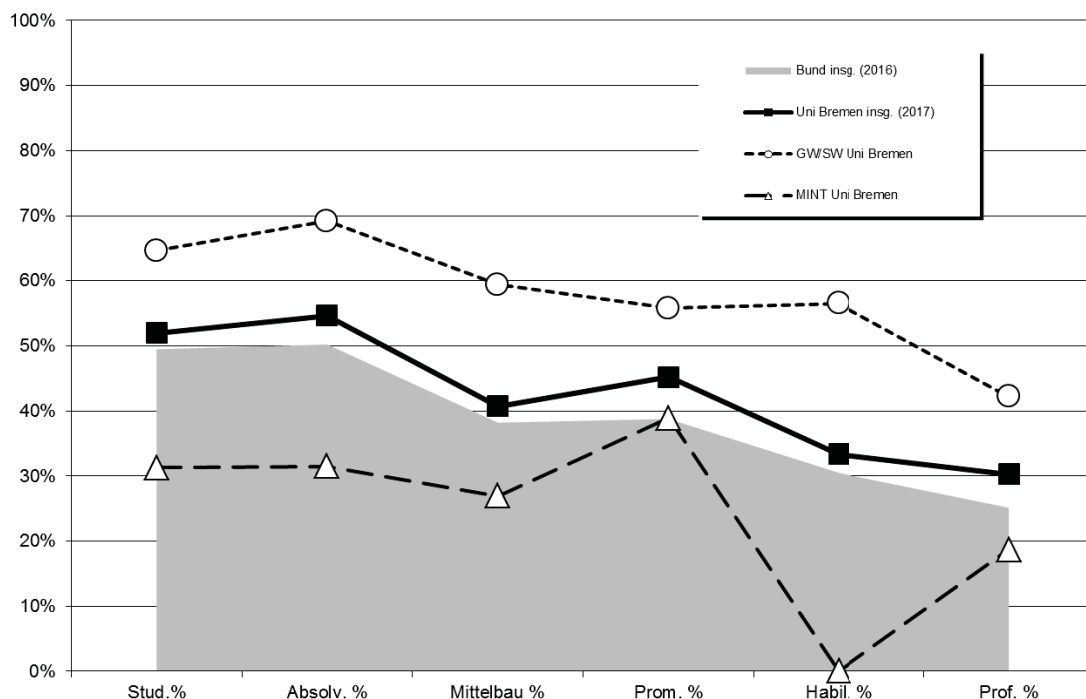
E. Gleichstellung

1. Kaskadenmodell: weibl. Anteile auf den verschiedenen Qualifikationsstufen

	Anteil weiblich in %					
	Stud. %	Absolv. %	Mittelbau %	Prom. %	Habil. %	Prof. %
FB 01 Physik/E-Technik	20%	17%	20%	25%		9%
FB 02 Bio/Chemie	58%	57%	39%	62%		21%
FB 03 Mathe/Informatik	31%	33%	30%	24%		30%
FB 04 Prod.technik	19%	19%	23%	27%		8%
FB 05 Geowiss.	39%	36%	36%	54%		24%
MINT Uni Bremen	31%	31%	27%	39%	0%	19%
MINT Bund	34%	31%	28%	34%	22%	16%
FB 06 Rechtswiss.	58%	58%	40%	55%		12%
FB 07 Wirtschaftswiss.	45%	47%	39%	34%		20%
FB 08 Soz./Pol.	51%	61%	51%	51%		58%
FB 09 Kulturwiss.	71%	80%	59%	66%		60%
FB 10 Sprach./Lit.wiss.	77%	78%	74%	85%		47%
FB 11 Human./Gesundheit	79%	81%	68%	62%		47%
FB 12 Erziehungswiss.	74%	81%	71%	76%		39%
GW/SW Uni Bremen	65%	69%	59%	56%	57%	42%
GW/SW Bund	60%	63%	52%	48%	37%	33%
MARUM			39%			45%
SOCIUM			54%			20%
sonstige Einheiten			46%			43%
Zentralverw.			84%			0%
Einheiten außerh. FB			47%			36%
Uni Bremen insg. (2018)	52%	55%	41%	45%	33%	30%
Bund insg. (2017)	49%	50%	38%	39%	30%	25%

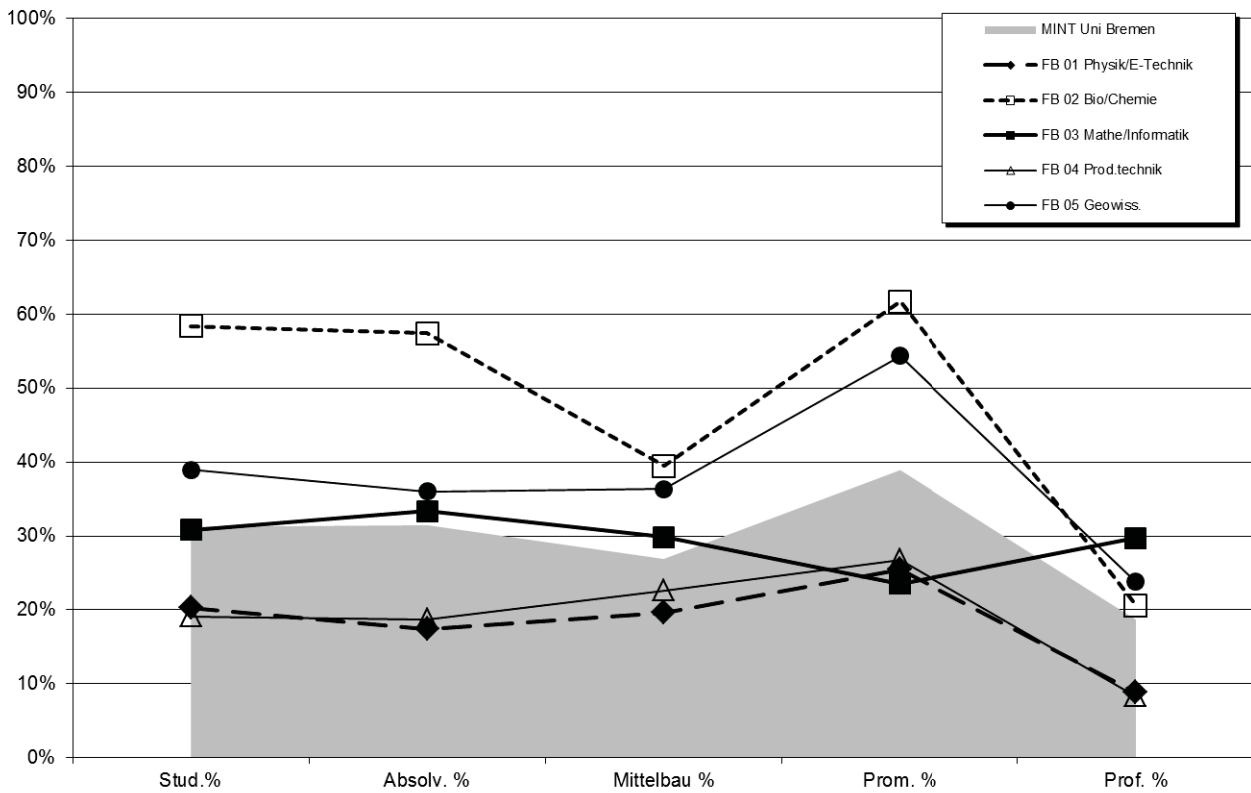
Promotionen und Habilitationen Uni Bremen: jeweils 3-Jahresdurchschnitt-Schnitt ('16-'18)
 Bund-Daten: aus der Bundesstatistik (Destatis2017), bereinigt um Human-, Veterinärmedizin u. Agrarwiss.

Kaskadenmodell Uni Bremen Fächergruppen im Vergleich zur Bundesstatistik

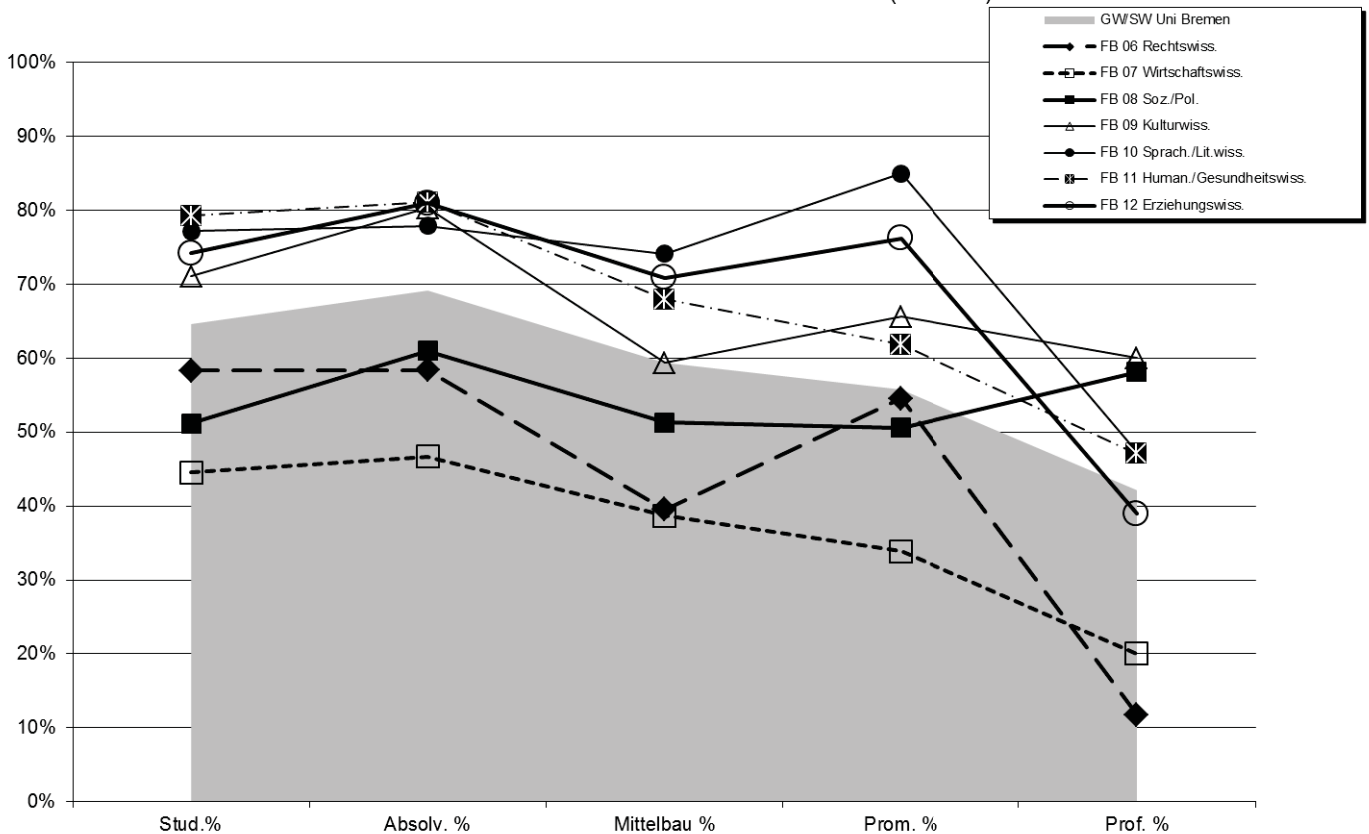


Fortsetzung: Kaskadenmodell

Kaskadenmodell Mathe/Informatik/Naturwiss./Technik (MINT)

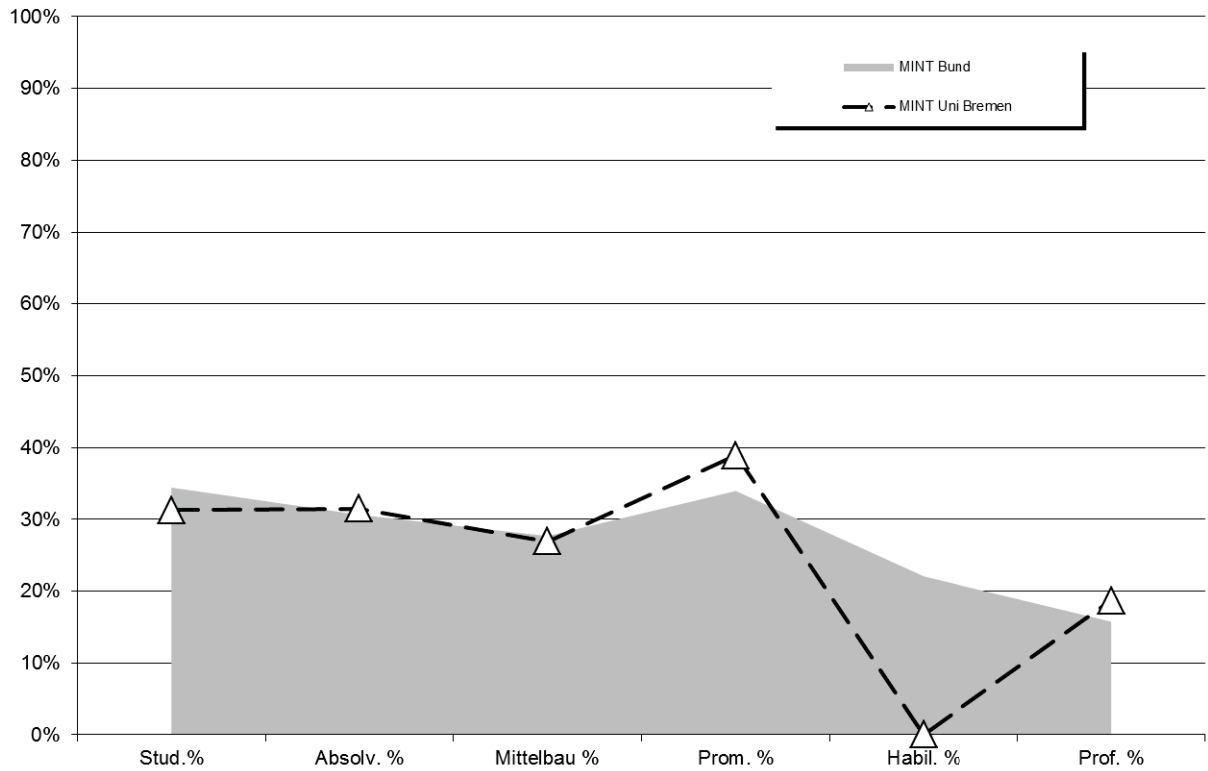


Kaskadenmodell Geistes- u. Sozialwissenschaften (GW/SW)

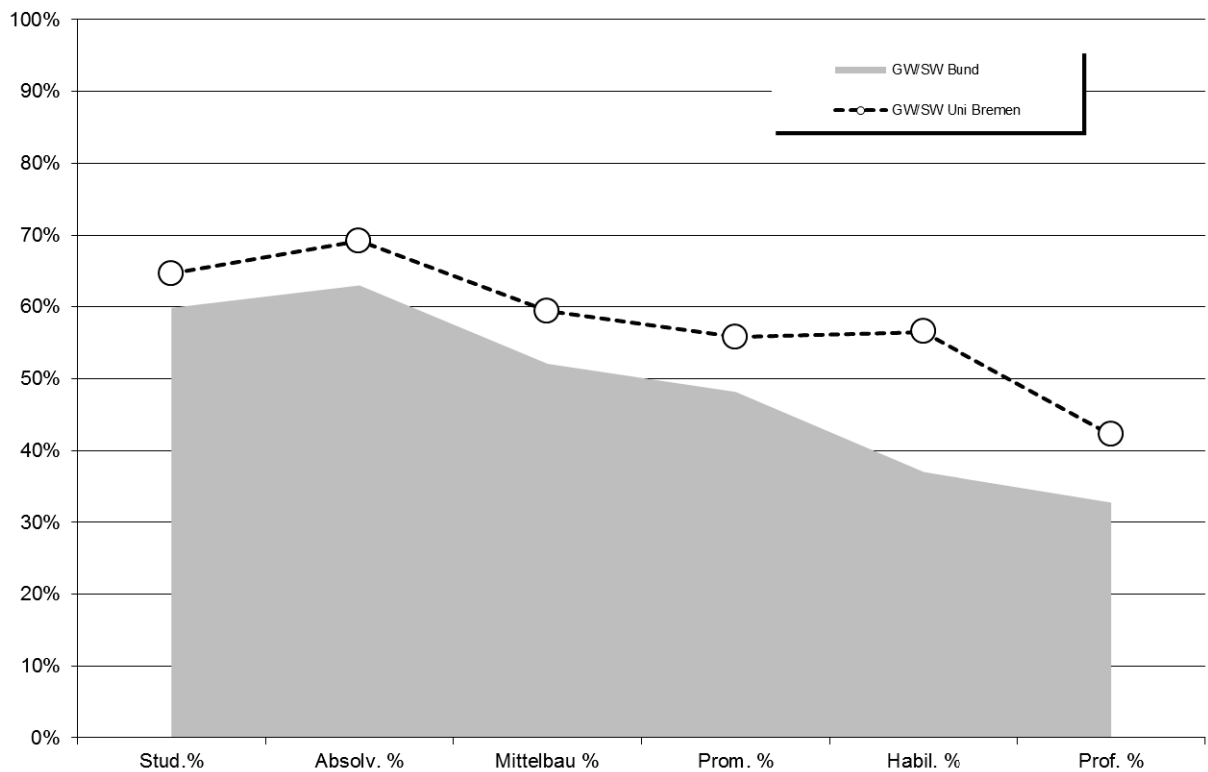


Fortsetzung: Kaskadenmodell

Kaskadenmodell Uni Bremen Fächergruppen im Vergleich zur Bundesstatistik



Kaskadenmodell Uni Bremen Fächergruppen im Vergleich zur Bundesstatistik



2. Studierende/Promotionen/Personal: Anteile weiblich im Zeitverlauf

a) Studierende

Fachbereich	weibliche Anteile in %							
	WS 11/12	WS 12/13	WS 13/14	WS 14/15	WS 15/16	WS 16/17	WS 17/18	WS 18/19
FB 01	21,9%	19,8%	16,9%	18,5%	19,4%	19,8%	20,5%	20,3%
FB 02	58,9%	57,3%	57,4%	57,0%	57,1%	58,5%	59,3%	58,4%
FB 03	33,2%	33,4%	31,8%	30,6%	30,9%	29,6%	28,8%	30,8%
FB 04	17,9%	19,0%	18,4%	19,1%	18,9%	18,4%	20,4%	19,1%
FB 05	42,7%	40,9%	39,9%	38,2%	36,8%	35,4%	36,2%	39,0%
FB 06	58,4%	57,4%	57,9%	57,1%	57,8%	58,4%	59,4%	58,3%
FB 07	46,2%	45,5%	45,2%	44,7%	44,1%	43,6%	43,1%	44,6%
FB 08	49,6%	48,8%	49,5%	50,6%	50,3%	51,5%	53,5%	51,2%
FB 09	71,1%	71,2%	72,2%	71,8%	73,0%	71,7%	70,4%	71,1%
FB 10	77,7%	76,2%	76,9%	76,9%	77,1%	76,5%	76,9%	77,2%
FB 11	77,5%	77,2%	78,5%	79,4%	79,9%	80,5%	81,0%	79,3%
FB 12	73,0%	79,9%	82,0%	75,6%	75,5%	75,5%	73,7%	74,2%
o.A.	45,8%	47,4%	57,9%	79,1%	78,5%	73,6%	75,6%	68,6%
Uni gesamt	51,6%	51,0%	50,7%	50,8%	51,2%	51,1%	51,8%	51,9%

Fachbereich	weibliche Anteile in %							
	WS 11/12	WS 12/13	WS 13/14	WS 14/15	WS 15/16	WS 16/17	WS 17/18	WS 18/19
FB 01 - 05	31,8%	31,6%	30,3%	30,2%	30,5%	30,1%	30,9%	31,2%
FB 06 - 12	63,9%	63,2%	63,6%	63,9%	64,0%	64,1%	64,5%	64,6%
Uni Ges	51,6%	51,0%	50,7%	50,8%	51,2%	51,1%	51,8%	51,9%

b) Promotionen

	weibliche Anteile in %									
	2009	2010	2011	2012	2013	2014	2015	2016	2017	2018
FB 01	24,3%	25,7%	29,0%	18,8%	23,4%	27,8%	14,7%	23,1%	31,3%	22,9%
FB 02	49,3%	65,1%	58,9%	61,1%	57,1%	63,2%	63,0%	62,5%	64,7%	57,1%
FB 03	30,0%	20,8%	4,5%	37,8%	39,4%	14,7%	20,0%	28,9%	23,3%	18,4%
FB 04	11,1%	18,2%	19,0%	9,4%	3,8%	16,7%	12,5%	33,3%	21,1%	26,4%
FB 05	45,2%	51,9%	50,0%	55,9%	30,4%	43,9%	31,0%	55,2%	53,3%	54,5%
FB 06	25,7%	59,5%	31,8%	40,0%	42,1%	41,2%	56,3%	62,1%	52,4%	43,8%
FB 07	32,3%	37,5%	10,0%	23,5%	37,9%	33,3%	30,4%	17,6%	22,2%	54,2%
FB 08	56,7%	61,5%	70,0%	60,0%	52,2%	48,4%	55,6%	53,6%	53,6%	44,0%
FB 09	53,3%	72,7%	66,7%	35,7%	75,0%	77,8%	100,0%	60,0%	63,6%	72,7%
FB 10	55,6%	50,0%	50,0%	55,6%	71,4%	100,0%	87,5%	75,0%	83,3%	90,0%
FB 11	62,5%	56,5%	65,4%	76,7%	66,7%	64,7%	60,0%	59,1%	59,4%	68,2%
FB 12	33,3%	22,2%	50,0%	45,5%	50,0%	20,0%	54,5%	100,0%	71,4%	72,7%
Gesamt	41,4%	48,8%	43,4%	44,4%	41,6%	42,8%	40,3%	45,9%	45,1%	44,7%

	weibliche Anteile in %									
	2009	2010	2011	2012	2013	2014	2015	2016	2017	2018
FB 01 - 05	39,0%	44,4%	40,7%	39,6%	33,7%	38,4%	31,2%	41,1%	39,7%	36,3%
FB 06 - 12	44,2%	53,8%	47,7%	51,5%	53,3%	51,8%	55,4%	54,0%	53,7%	59,7%
Gesamt	41,4%	48,8%	43,4%	44,4%	41,6%	42,8%	40,3%	45,9%	45,1%	44,7%

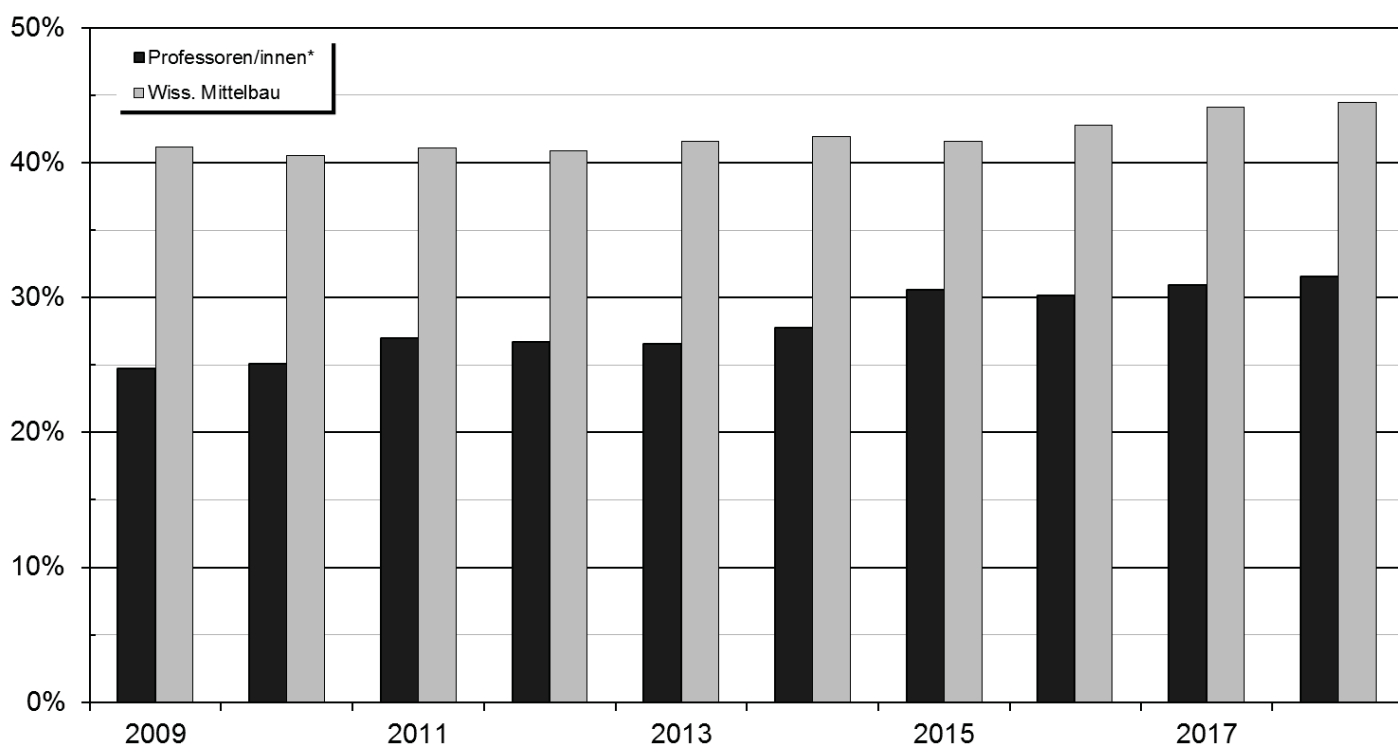
Fachbereiche sind über den 1. Gutachter zugeordnet.

c) Personal (Köpfe:) Weibliches Personal insgesamt (Köpfe in %) im Zeitverlauf

	weibliche Anteile in %									
	2009	2010	2011	2012	2013	2014	2015	2016	2017	2018
Arbeiter/innen	42%	41%	41%	40%	38%	36%	33%	32%	31%	31%
Sekretariate	99%	99%	99%	99%	99%	99%	99%	99%	99%	99%
Techniker/innen	37%	37%	37%	35%	36%	36%	35%	33%	33%	32%
Verwaltung	76%	76%	77%	77%	77%	78%	78%	77%	78%	77%
Nichtwiss. Personal insg.	63%	63%	63%	63%	63%	64%	63%	62%	62%	62%
Professoren/innen*	25%	25%	27%	27%	27%	28%	31%	30%	31%	32%
Wiss. Mittelbau	41%	40%	41%	41%	42%	42%	42%	43%	44%	44%
Wiss. Personal insg.	39%	38%	39%	39%	40%	40%	40%	41%	42%	43%
Personal insg.	48%	47%	48%	48%	48%	48%	48%	48%	49%	49%

* Koop. Prof enthalten

Anteil weiblich in %



d) Personal (VZÄ) Weibliches Personal insgesamt (Vollzeitäquivalente in %) im Zeitverlauf

	weibliche Anteile in %									
	2009	2010	2011	2012	2013	2014	2015	2016	2017	2018
Arbeiter/innen	30%	28%	29%	29%	27%	26%	24%	23%	23%	24%
Sekretariate	99%	99%	99%	100%	100%	99%	99%	99%	99%	98%
Techniker/innen	31%	32%	31%	30%	31%	31%	30%	29%	29%	28%
Verwaltung	72%	72%	73%	73%	74%	75%	75%	74%	75%	74%
Nichtwiss. Personal insg.	57%	57%	57%	57%	58%	58%	58%	57%	58%	57%
Professoren/innen*	24%	24%	26%	26%	26%	28%	30%	29%	29%	30%
Wiss. Mittelbau	37%	36%	37%	37%	37%	38%	38%	38%	40%	41%
Wiss. Personal insg.	35%	34%	35%	35%	36%	36%	36%	36%	38%	39%
Personal insg.	43%	43%	43%	43%	43%	44%	44%	44%	45%	45%

* Koop. Prof enthalten

Fortsetzung: weiblicher Anteil in % Personal (VZÄ)

Wissenschaftlicher Mittelbau

	2009	2010	2011	2012	2013	2014	2015	2016	2017	2018
FB 01	21%	18%	17%	19%	18%	17%	19%	18%	18%	20%
FB 02	49%	46%	49%	49%	48%	49%	50%	43%	42%	39%
FB 03	23%	23%	25%	24%	26%	25%	22%	26%	29%	30%
FB 04	24%	23%	25%	26%	22%	19%	22%	19%	22%	23%
FB 05	30%	24%	25%	26%	26%	29%	29%	27%	31%	36%
IW/NW	26%	24%	25%	26%	25%	25%	25%	24%	26%	27%
FB 06	46%	47%	42%	45%	44%	44%	41%	41%	40%	40%
FB 07	29%	28%	32%	32%	32%	32%	33%	36%	36%	39%
FB 08	51%	49%	48%	40%	46%	54%	46%	50%	49%	51%
FB 09	56%	53%	51%	50%	51%	51%	54%	52%	56%	59%
FB 10	69%	70%	68%	71%	68%	71%	72%	75%	72%	74%
FB 11	57%	58%	59%	56%	61%	58%	59%	63%	69%	68%
FB 12	68%	66%	67%	64%	66%	69%	73%	74%	74%	71%
GW/SW	56%	56%	54%	52%	53%	55%	55%	57%	58%	59%
MARUM				35%	38%	38%	33%	39%	41%	39%
SOCIUM				46%	46%	46%	51%	47%	53%	54%
sonstige Einheiten	38%	39%	41%	46%	46%	46%	51%	47%	48%	46%
Zentralverw.	63%	62%	69%	72%	61%	59%	69%	69%	82%	84%
Einheiten außerh. FB	39%	40%	42%	44%	44%	44%	44%	45%	48%	47%
Insgesamt	37%	36%	37%	37%	37%	38%	38%	38%	40%	41%

Prof (inc. Junior)

	2009	2010	2011	2012	2013	2014	2015	2016	2017	2018
FB 01	8%	6%	6%	6%	6%	6%	9%	6%	6%	9%
FB 02	19%	17%	17%	16%	18%	18%	20%	20%	19%	21%
FB 03	24%	24%	27%	25%	25%	30%	28%	33%	31%	30%
FB 04	5%	5%	5%	5%	5%	4%	9%	9%	9%	8%
FB 05	15%	15%	19%	22%	20%	22%	22%	23%	18%	24%
IW/NW	15%	14%	15%	15%	15%	17%	18%	19%	18%	19%
FB 06	21%	36%	43%	31%	25%	14%	13%	18%	13%	12%
FB 07	0%	6%	7%	6%	6%	16%	17%	15%	10%	20%
FB 08	35%	35%	37%	41%	44%	47%	49%	47%	48%	58%
FB 09	45%	35%	47%	55%	55%	52%	60%	64%	63%	60%
FB 10	37%	39%	44%	44%	39%	39%	52%	50%	52%	47%
FB 11	43%	43%	43%	46%	45%	53%	53%	41%	41%	47%
FB 12	64%	64%	56%	50%	47%	50%	50%	41%	40%	39%
GW/SW	36%	36%	40%	40%	39%	40%	43%	40%	40%	42%
MARUM				42%	29%	30%	33%	33%	45%	45%
SOCIUM				0%	0%	26%	40%	38%	100%	20%
sonstige Einheiten	17%	18%	17%	0%	0%	26%	40%	38%	50%	43%
Zentralverw.	0%	0%	0%	0%	0%	0%	0%	0%	0%	0%
Einheiten außerh. FB	16%	17%	15%	20%	16%	26%	33%	33%	48%	36%
Insgesamt	24%	24%	26%	26%	26%	28%	30%	29%	29%	30%

e) *Habilitationen*

	weibliche Anteile in %									
	2009	2010	2011	2012	2013	2014	2015	2016	2017	2018
NW	13%	25%	0%	50%	33%	0%	0%	0%	0%	0%
GW	33%	11%	40%	33%	63%	100%	57%	63%	40%	80%
Gesamt	18%	18%	25%	40%	55%	33%	57%	33%	24%	57%