

E. Gleichstellung

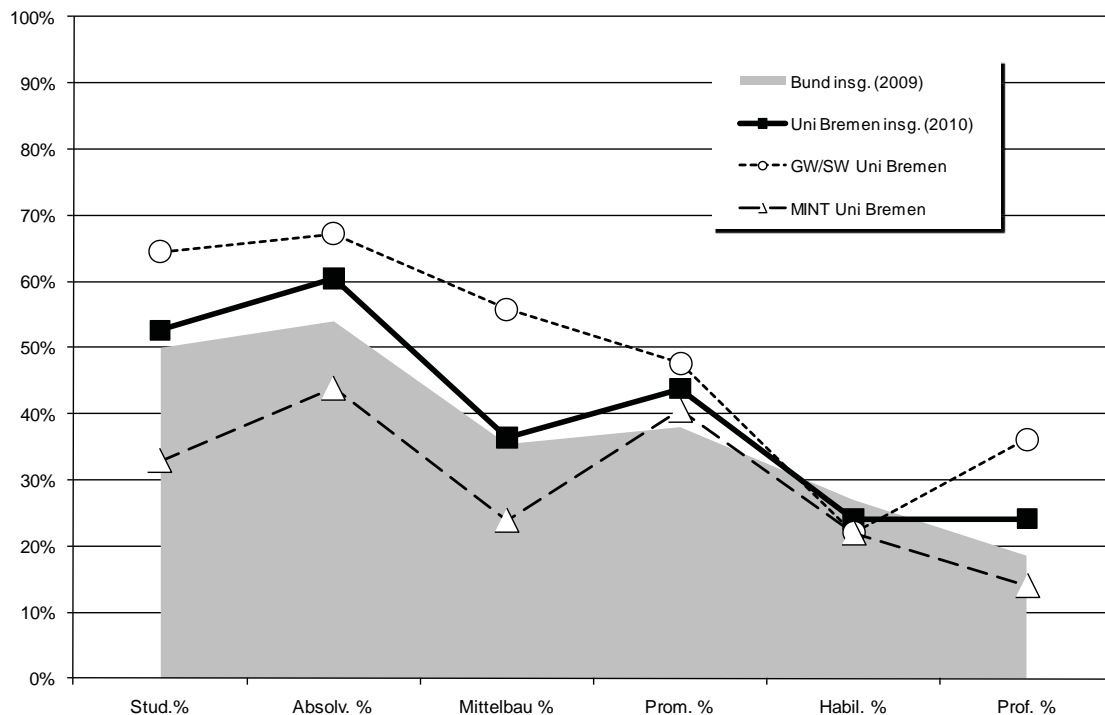
1. Kaskadenmodell: weibl. Anteile auf den verschiedenen Qualifikationsstufen

	Anteil weiblich in %					
	Stud. %	Absolv. %	Mittelbau %	Prom. %	Habil. %	Prof. %
FB 01 Physik/E-Technik	22%	20%	18%	24%		6%
FB 02 Bio/Chemie	61%	71%	46%	54%		17%
FB 03 Mathe/Informatik	34%	49%	23%	28%		24%
FB 04 Prod.technik	18%	16%	23%	17%		5%
FB 05 Geowiss.	44%	49%	24%	47%		15%
MINT Uni Bremen	33%	44%	24%	40%	22%	14%
FB 06 Rechtswiss.	60%	56%	47%	46%		36%
FB 07 Wirtschaftswiss.	45%	42%	28%	35%		6%
FB 08 Soz./Pol.	50%	56%	49%	53%		35%
FB 09 Kulturwiss.	70%	71%	53%	54%		35%
FB 10 Sprach./Lit.wiss.	78%	85%	70%	57%		39%
FB 11 Human./Gesundheit	78%	83%	58%	58%		43%
FB 12 Erziehungswiss.	62%	83%	66%	36%		64%
GW/SW Uni Bremen	64%	67%	56%	48%	22%	36%
sonstige Einheiten			39%			18%
Zentralverw.			62%			
Einheiten außerh. FB			40%			17%
Uni Bremen insg. (2010)	53%	60%	36%	44%	24%	24%
Bund insg. (2009)	50%	54%	35%	38%	27%	19%

Promotionen und Habilitationen Uni Bremen: jeweils 3-Jahresdurchschnitt-Schnitt ('08-'10)

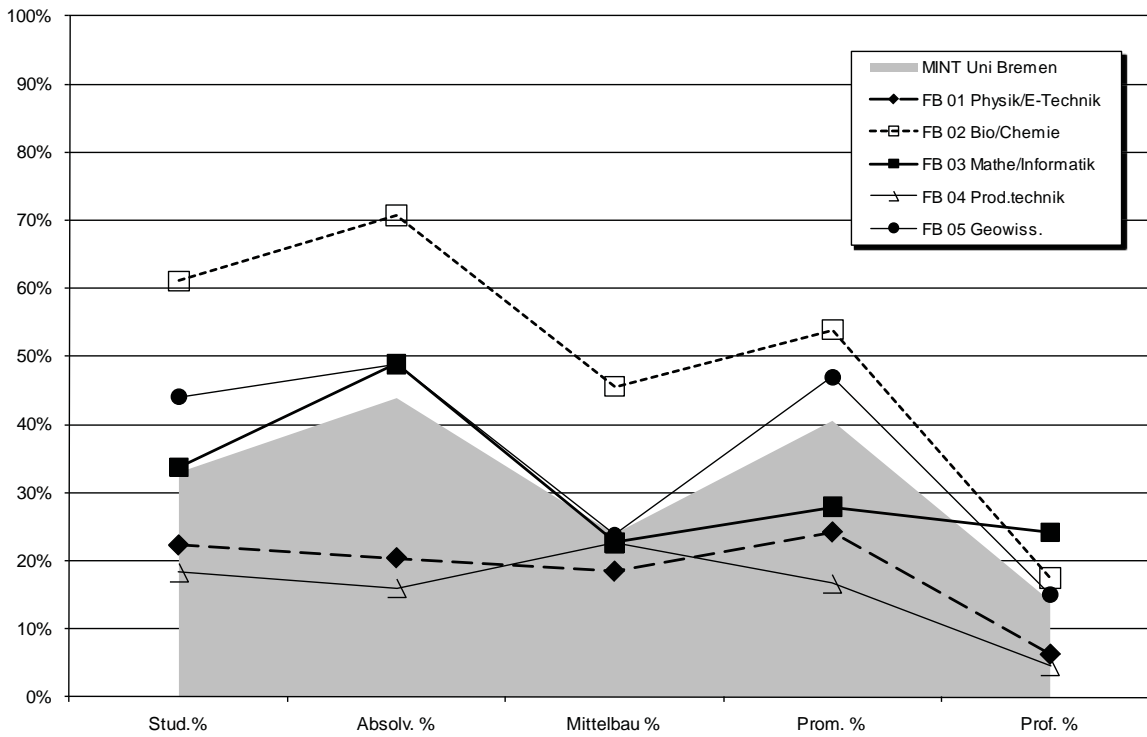
Bund-Daten: aus der Bundesstatistik (Destatis2009), bereinigt um Human-, Veterinärmedizin u. Agrarwiss.

Kaskadenmodell Uni Bremen Fächergruppen im Vergleich zur Bundesstatistik

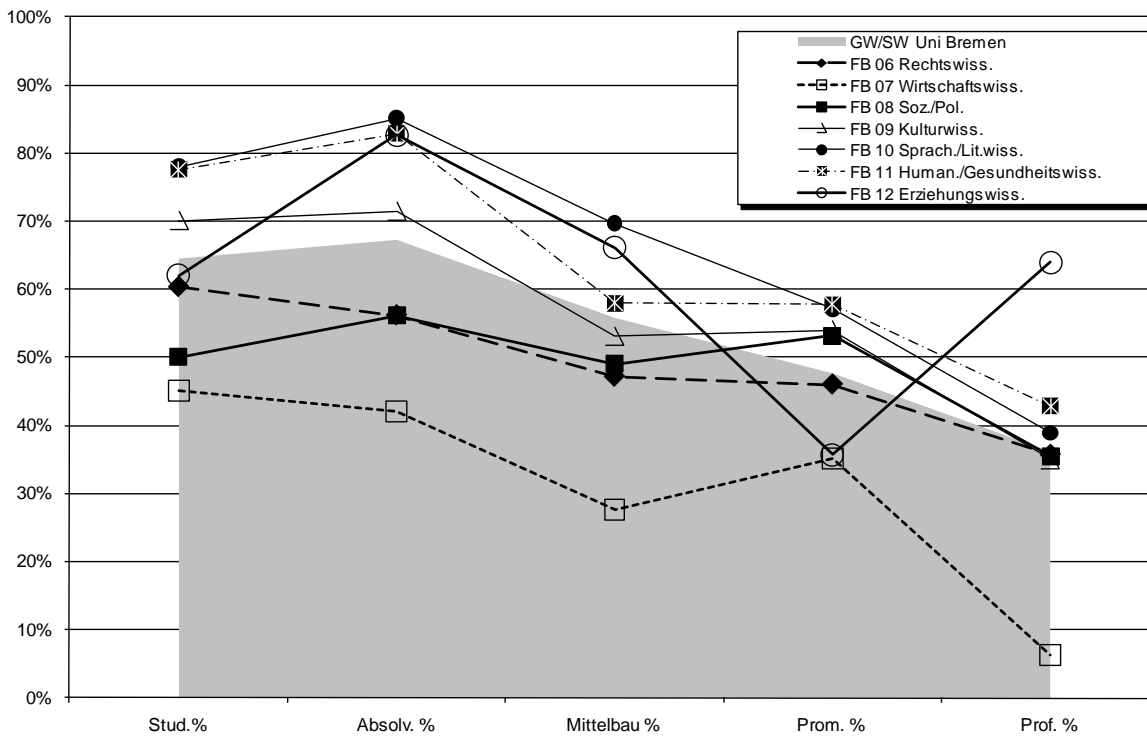


Fortsetzung: Kaskadenmodell

Kaskadenmodell Mathe/Informatik/Naturwiss./Technik (MINT)



Kaskadenmodell Geistes-u. Sozialwissenschaften (GW/SW)



2. Studierende/Promotionen/Personal: Anteile weiblich im Zeitverlauf

a) Studierende

Fachbereich	weibliche Anteile in %						4-Jahres- durchschnitt
	WS 05/06	WS 06/07	WS 07/08	WS 08/09	WS 09/10	WS 10/11	
FB 01	15,4%	15,1%	14,7%	16,2%	20,0%	22,3%	18,2%
FB 02	60,9%	61,3%	62,0%	61,6%	61,4%	61,1%	61,5%
FB 03	30,7%	31,0%	31,7%	32,4%	32,5%	33,7%	32,5%
FB 04	19,5%	18,1%	18,0%	17,8%	18,0%	18,3%	18,0%
FB 05	43,3%	45,4%	45,5%	42,9%	45,4%	44,1%	44,5%
FB 06	53,0%	55,2%	56,8%	58,7%	58,5%	60,3%	58,5%
FB 07	44,2%	45,8%	45,0%	45,6%	43,5%	45,1%	44,8%
FB 08	52,1%	51,5%	50,8%	51,5%	50,1%	50,1%	50,6%
FB 09	61,8%	64,2%	67,0%	68,1%	69,0%	70,1%	68,4%
FB 10	76,1%	77,2%	77,7%	78,2%	79,4%	78,0%	78,3%
FB 11	76,5%	79,9%	80,1%	78,9%	78,4%	77,6%	78,8%
FB 12	73,6%	74,4%	76,7%	74,7%	73,7%	62,0%	72,5%
o.A.	73,9%	78,2%	77,1%	81,1%	71,0%	78,5%	76,7%
Uni gesamt	52,5%	53,0%	53,0%	52,6%	52,9%	52,6%	52,8%

Fachbereich	weibliche Anteile in %						4-Jahres- durchschnitt
	WS 05/06	WS 06/07	WS 07/08	WS 08/09	WS 09/10	WS 10/11	
FB 01 - 05	33,0%	32,4%	32,2%	31,9%	32,5%	32,9%	32,4%
FB 06 - 12	61,5%	63,3%	64,1%	64,6%	64,8%	64,4%	64,5%
Uni Ges	52,5%	53,0%	53,0%	52,6%	52,9%	52,6%	52,8%

b) Promotionen

	2007				2008				2009				2010				3-Jahres- durchschnitt 2008-2010
	m	w	Ges	w in %	m	w	Ges	w in %	m	w	Ges	w in %	m	w	Ges	w in %	
FB 01	31	8	39	21%	18	5	23	22%	28	9	37	24%	26	9	35	26%	24%
FB 02	26	24	50	48%	32	31	63	49%	39	37	76	49%	22	41	63	65%	54%
FB 03	16	1	17	6%	16	8	24	33%	14	6	20	30%	19	5	24	21%	28%
FB 04	22	3	25	12%	13	3	16	19%	8	1	9	11%	9	2	11	18%	17%
FB 05	7	9	16	56%	14	11	25	44%	17	14	31	45%	13	14	27	52%	47%
FB 06	15	11	26	42%	17	18	35	51%	27	9	36	25%	17	25	42	60%	46%
FB 07	15	10	25	40%	25	14	39	36%	21	10	31	32%	15	9	24	38%	35%
FB 08	12	14	26	54%	14	9	23	39%	13	17	30	57%	10	16	26	62%	53%
FB 09	7	9	16	56%	8	4	12	33%	6	8	14	57%	3	8	11	73%	54%
FB 10	9	1	10	10%	2	3	5	60%	3	5	8	63%	4	4	8	50%	57%
FB 11	6	6	12	50%	8	9	17	53%	9	15	24	63%	10	13	23	57%	58%
FB 12	1	4	5	80%	2	2	4	100%	2	1	3	33%	7	2	9	22%	36%
Gesamt	167	100	267	37%	167	117	284	41%	187	132	319	41%	155	148	303	49%	44%

	2007				2008				2009				2010				3-Jahres- durchschnitt 2008-2010
	m	w	Ges	w in %	m	w	Ges	w in %	m	w	Ges	w in %	m	w	Ges	w in %	
FB 01 - 05	102	45	147	31%	93	58	151	38%	106	67	173	39%	89	71	160	44%	40%
FB 06 - 12	65	55	120	46%	74	59	133	44%	81	65	146	45%	66	77	143	54%	48%
Gesamt	167	100	267	37%	167	117	284	41%	187	132	319	41%	155	148	303	49%	44%

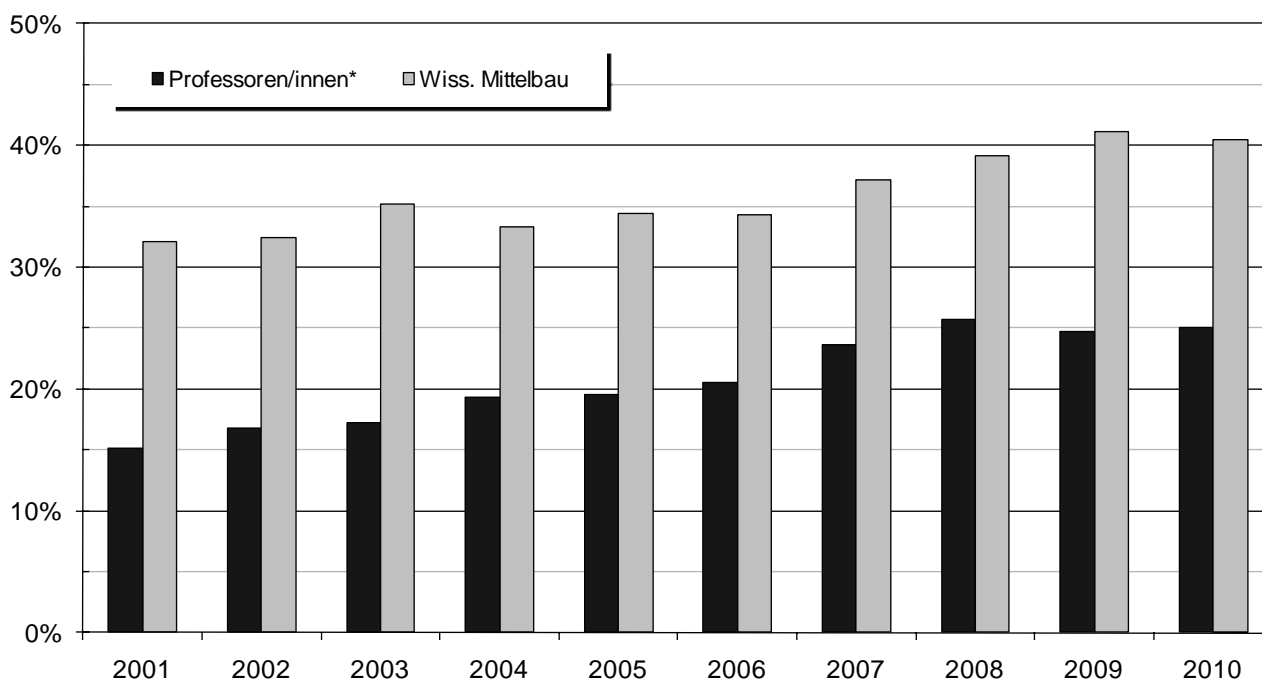
Fachbereiche sind über den 1. Gutachter zugeordnet.

c) Personal (Köpfe:) Weibliches Personal insgesamt (Köpfe in %) im Zeitverlauf

	2001	2002	2003	2004	2005	2006	2007	2008	2009	2010
Arbeiter/innen	51%	50%	47%	48%	46%	46%	43%	42%	42%	41%
Sekretariate	100%	100%	100%	100%	100%	100%	100%	100%	99%	99%
Techniker/innen	37%	38%	36%	37%	38%	38%	37%	37%	37%	37%
Verwaltung	72%	73%	75%	75%	74%	74%	75%	75%	76%	76%
Nichtwiss. Personal insg.	64%	64%	64%	64%	64%	63%	64%	63%	63%	63%
Professoren/innen*	15%	17%	17%	19%	20%	21%	24%	26%	25%	25%
Wiss. Mittelbau	32%	32%	35%	33%	34%	34%	37%	39%	41%	40%
Wiss. Personal insg.	29%	29%	32%	31%	32%	32%	35%	37%	39%	38%
Personal insg.	43%	43%	44%	44%	45%	45%	47%	47%	48%	47%

* Koop. Prof enthalten

Anteil weiblich in %



d) Personal (VZÄ) Weibliches Personal insgesamt (Vollzeitäquivalente in %) im Zeitverlauf

	2001	2002	2003	2004	2005	2006	2007	2008	2009	2010
Arbeiter/innen	40%	39%	36%	35%	33%	33%	31%	30%	30%	28%
Sekretariate	100%	100%	100%	100%	100%	100%	100%	100%	99%	99%
Techniker/innen	32%	32%	30%	31%	32%	32%	31%	31%	31%	32%
Verwaltung	68%	70%	72%	72%	71%	70%	72%	72%	72%	72%
Nichtwiss. Personal insg.	58%	58%	58%	58%	58%	57%	58%	57%	57%	57%
Professoren/innen*	15%	16%	17%	19%	19%	20%	23%	25%	24%	24%
Wiss. Mittelbau	29%	29%	32%	30%	31%	31%	33%	35%	37%	36%
Wiss. Personal insg.	26%	26%	29%	28%	28%	29%	31%	33%	35%	34%
Personal insg.	38%	38%	40%	40%	40%	40%	42%	42%	43%	43%

* Koop. Prof enthalten